

Dry food



# St Laurent

## Flamingo food - maintenance

Saint Laurent range

(Reference: 400900)



### Presentation

Extruded food for adult pink flamingos

### Recommendations

Store this product in a cool dry place.  
Close bag properly after opening.

### Pack size

15 kg bag (Ref. 400900)

### Composition

Cereals, by-products of vegetable origin, fish and fish by-products, minerals, crustaceans, brewer's yeast, vitamins.

|               |   |      |
|---------------|---|------|
| Crude protein | % | 20   |
| Crude fat     | % | 6.20 |
| Ash           | % | 7.60 |
| Crude fibre   | % | 3.50 |

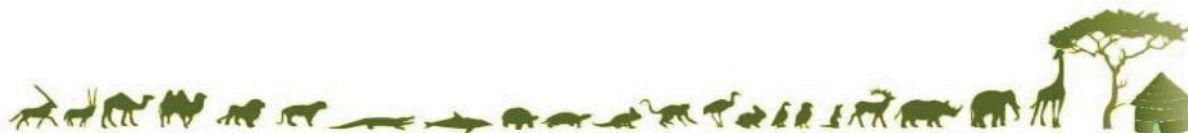
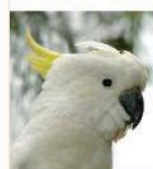
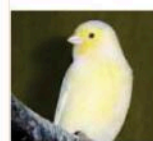
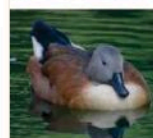
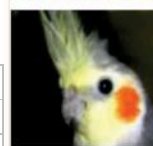
### Instructions

Before feeding, soak the granules in water for several minutes until they have swelled slightly

### Contact

[commercial@st-laurent.fr](mailto:commercial@st-laurent.fr)

[www.st-laurent.fr](http://www.st-laurent.fr)



Dry food



# St Laurent

## Flamingo food - maintenance

Saint Laurent range

(Reference: 400900)



### COMPLETE ANALYSIS

|               |   |      |             |       |       |
|---------------|---|------|-------------|-------|-------|
| Crude protein | % | 20   | Vitamin A   | UI/kg | 22000 |
| Crude fat     | % | 6.20 | Vitamin D3  | UI/kg | 4200  |
| Ash           | % | 7.60 | Vitamin E   | mg/kg | 320   |
| Crude fibre   | % | 3.50 | Vitamin K   | mg/kg | 60    |
| Moisture      | % | 6.20 | Vitamin B1  | mg/kg | 36    |
|               |   |      | Vitamin B2  | mg/kg | 11    |
| Calcium       | % | 1.60 | Vitamin B3  | mg/kg | 60    |
| Phosphorus    | % | 0.60 | Vitamin B5  | mg/kg | 32    |
|               |   |      | Vitamin B6  | mg/kg | 12    |
|               |   |      | Vitamin B8  | mg/kg | 0.4   |
|               |   |      | Vitamin B9  | mg/kg | 8     |
|               |   |      | Vitamin B12 | mg/kg | 0.064 |
|               |   |      | Vitamin C   | mg/kg | 80    |
|               |   |      |             |       |       |
|               |   |      |             |       |       |
|               |   |      |             |       |       |
|               |   |      |             |       |       |
|               |   |      |             |       |       |
|               |   |      |             |       |       |
|               |   |      |             |       |       |
|               |   |      |             |       |       |
|               |   |      |             |       |       |

| Daily ration              |                   |                    |               |                |
|---------------------------|-------------------|--------------------|---------------|----------------|
| Quantity / kg body weight | Quantity / animal | No. of feeds / day | Volume / week | Volume / month |
|                           |                   |                    |               |                |

