

Dry food



FORMULA N°1



St Laurent



New World monkeys

Pellet size: 13 x 40 mm
(Reference 300015)

Presentation

Specifically adapted for NEW WORLD MONKEYS such as spider monkeys, capuchins, sakis...).

The pellets can be used as a complete food, sufficient in itself to meet the nutritional needs of these primates.

In order to cater for the particular needs of each species, it is also possible to use a mixture of this formula (n° 1) and the formula for folivores (n° 2).

Fresh fruit and vegetables can be also given daily in reasonable quantities.

Gluten and lactose free, without added sugar, palm oil, colourings or preservatives.

Composition

Cereals, by-products of plant origin, processed animal protein (poultry), fruit, shellfish, minerals, yeast, vitamins, flavouring (EC approved).

Analysis

Crude protein	%	24,50
Crude fat	%	4,60
Crude fibre	%	7,10
Ash	%	8,20

Instructions

Store in a cool dry place, and close the bag after use
Serve with clean, fresh water freely available

Contact

commercial@st-laurent.fr
www.st-laurent.fr

Recommendations

Variety is the key in the primate diet.

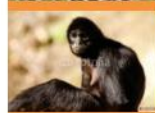
The daily ration should take into account the animal's level of exercise, its physiological stage and the digestibility of the food.

Food should be given in sufficient quantities to ensure the good physiological condition of the animals.

Check the amounts consumed and the animal's state of health.

Pack size

13 kg bag
Pellet size : 13 x 40 mm



Dry food



FORMULA N°1



St Laurent

New World monkeys

Pellet size: 13 x 40 mm

(Reference 300015)



COMPLETE ANALYSIS

Analysis (%)			Amino acids (%)		
Crude protein	%	24,50	Arginine	%	1,47
Crude fat	%	4,60	Lysine	%	1,25
Ash	%	7,10	Methionine	%	0,34
Crude fibre	%	8,20	Cystine	%	0,34
Moisture	%	6,80	Histidine	%	0,50
Total fibre (AOAC 985-29)	%	19,90	Threonine	%	0,89
Energy (MJ/kg)			Isoleucine	%	0,97
Gross energy	MJ/kg	14,85	Leucine	%	1,84
Minerals (%)			Phenylalanine	%	1,09
Calcium	%	1,98	Valine	%	1,16
Phosphorus	%	0,68	Tyrosine	%	0,70
Sodium	%	0,25	Glycine	%	1,45
Potassium	%	0,86	Acide aspartique	%	2,39
Magnesium	%	0,15	Acide glutamique	%	3,44
Trace elements per kg			Proline	%	1,52
Iron	mg	79	Serine	%	1,17
Copper	mg	17,80	Alanine	%	1,35
Manganese	mg	36	Arginine	%	1,47
Zinc	mg	32	Vitamins per kg		
Cobalt	mg	0,10	Vitamin A	UI	27000
Iodine	mg	0,24	Vitamin D3	UI	3120
Selenium	mg	0,31	Vitamin E	mg	455
Fatty acids			Vitamin K (as menadione)	mg	3,50
C12: 0 Lauric acid	%	0,17	Thiamin (B1)	mg	80
C14: 0 Myristic acid	%	0,09	Riboflavin (B2)	mg	25
C16: 0 Palmitic acid	%	0,80	Nicotinic acid (B3)	mg	120
C18: 0 Stearic acid	%	0,25	Pantothenic acid (B5)	mg	84
C14: 1 Myristoleic acid	%	0,01	Pyridoxine (B6)	mg	35
C16: 1 Palmitoleic acid	%	0,08	Biotin (B8)	mg	0,45
C18: 1 Oleic acid	%	1,31	Folic acid (B9)	mg	9,50
C18: 2 (w6) Linoleic acid	%	1,41	Cobalamin (B12)	mg	0,10
C18: 3 (w3) Linolenic acid	%	0,11	Choline-Chloride	mg	1300
C20: 4 (w6) Arachidonic acid	%	0,01	Inositol	mg	450
C22: 5 (w3) Clupanodonic acid	%				

Daily ration

Q. /kg body weight	Quantity / animal	No. of feeds / day	Volume / week	Volume / month



S.A.S. au capital de 80000€. - Siège social : 79430 La Chapelle Saint-Laurent - Tél. : 05 49 72 09 20 - Fax : 05 49 72 11 12

R.C.S. BRESSUIRE - Siret B 337 860 456 00017 - Code APE 4632A - N° d'abatteur 59

